

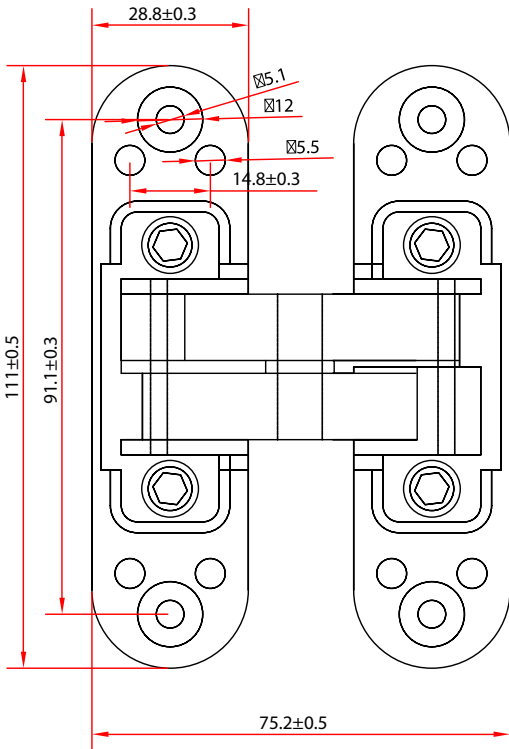
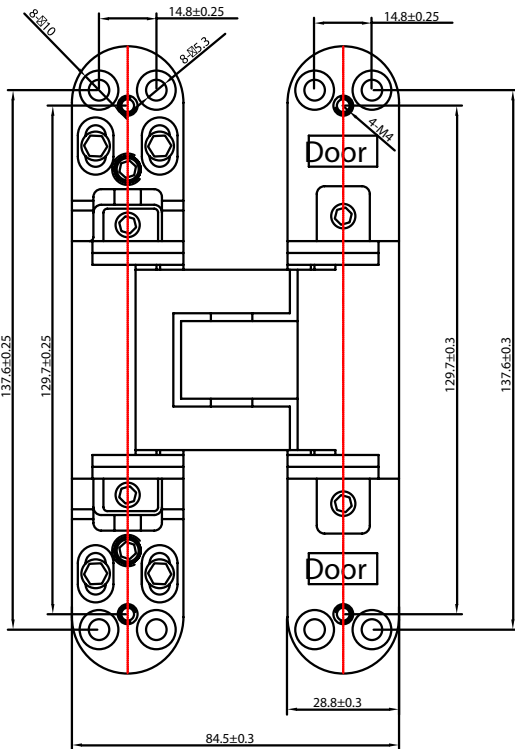
Briton

3D Adjustable Concealed Hinge  
RSH17-80  
RSH17-120

Product Overview

RSH17-80: Briton concealed Hinge 80kg

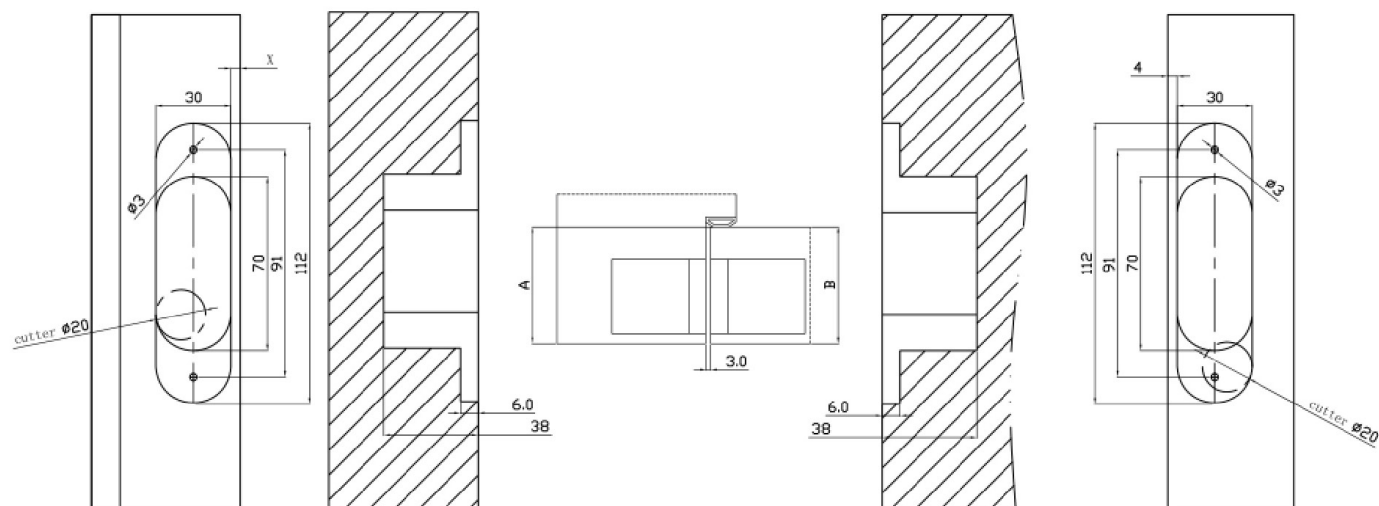
RSH17-120: Briton concealed Hinge 120kg

Model	RSH17-80		RSH17-120	
Door weight	80kg (by 2 hinges)		120kg (by 2 hinges)	
Opening angle	180°			
Material	304 Stainless Steel			
Min door thickness	40mm		42mm	
Max. door height	2400mm			
Max. door width	1000mm			
Cutter diameter	Ø20mm		Ø24mm	
Cutting length	160 & 131mm			
Cutting width	10 & 34mm			
Dimensions				

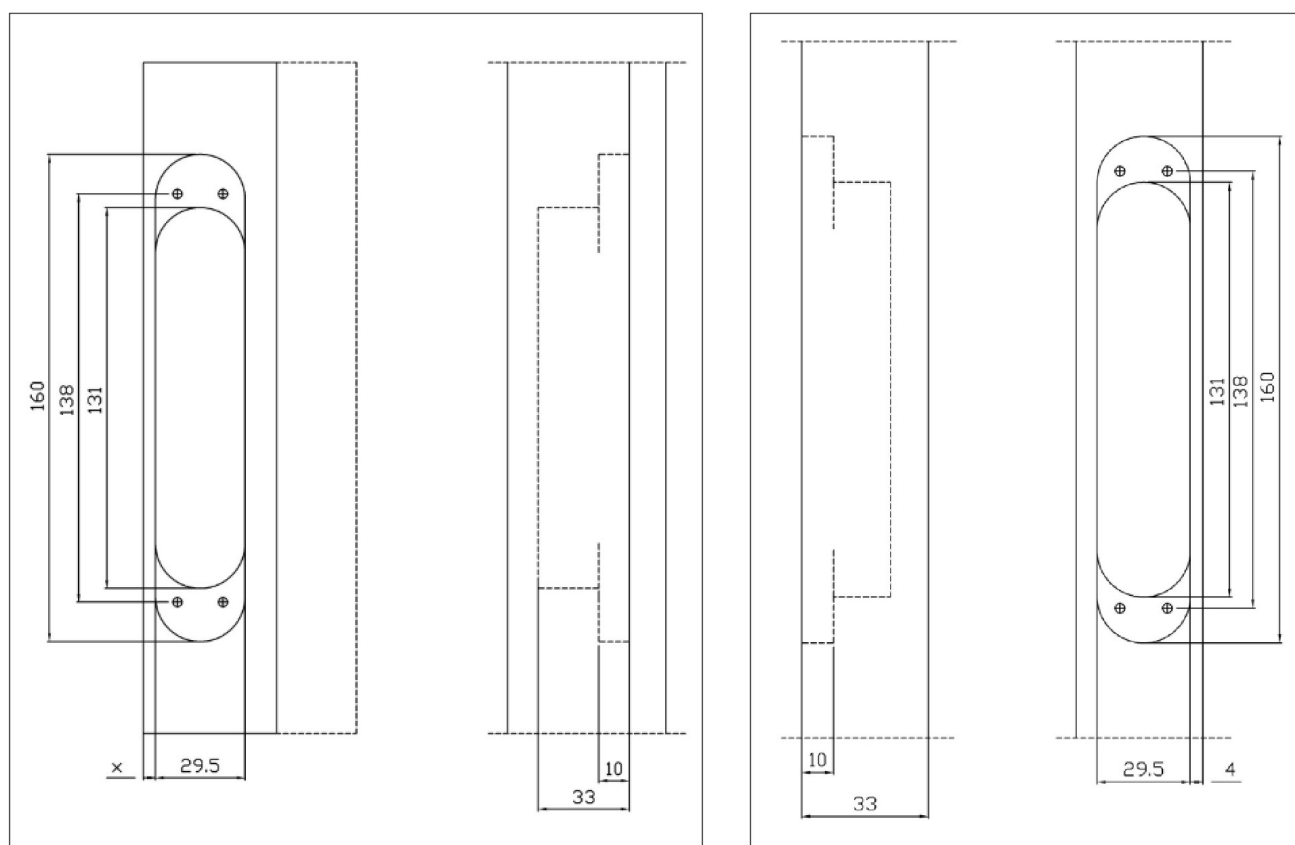
For timber, flushed doors only.

## Cut out drawings

### RSH17-80: Briton concealed Hinge 80kg



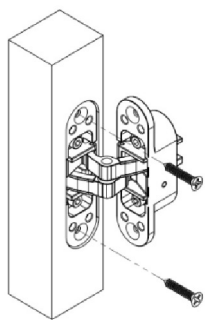
### RSH17-120: Briton concealed Hinge 120kg



## Installation Instructions

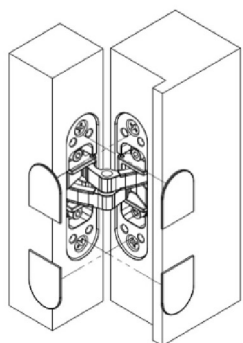
**RSH17-80:** Briton concealed Hinge 80kg

**RSH17-120:** Briton concealed Hinge 120kg

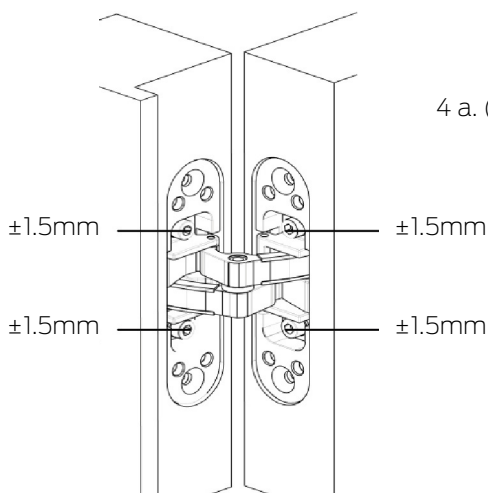


1. Install door lead part with the side marked "Door"

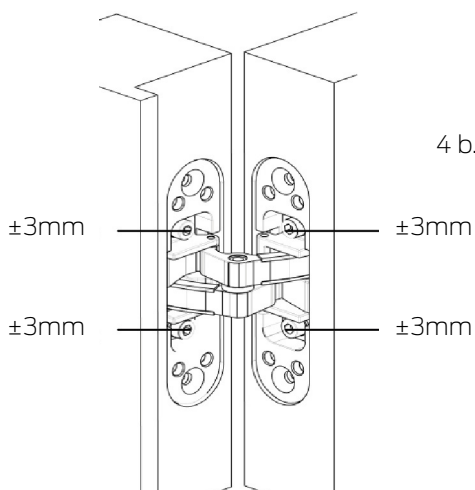
2. Install door frame part with another side



3. Adjust the position and fix the screw, then put the decorative covers on the product



4 a. (For RSH17-80) Vertical adjustment  $\pm 1.5\text{mm}$ . Horizontal adjustment  $\pm 1.5\text{mm}$ .



4 b. (For RSH17-120) Vertical adjustment  $\pm 3\text{mm}$ . Horizontal adjustment  $\pm 3\text{mm}$ .



1800 098 094  
info.au@allegion.com

©Allegion 2022